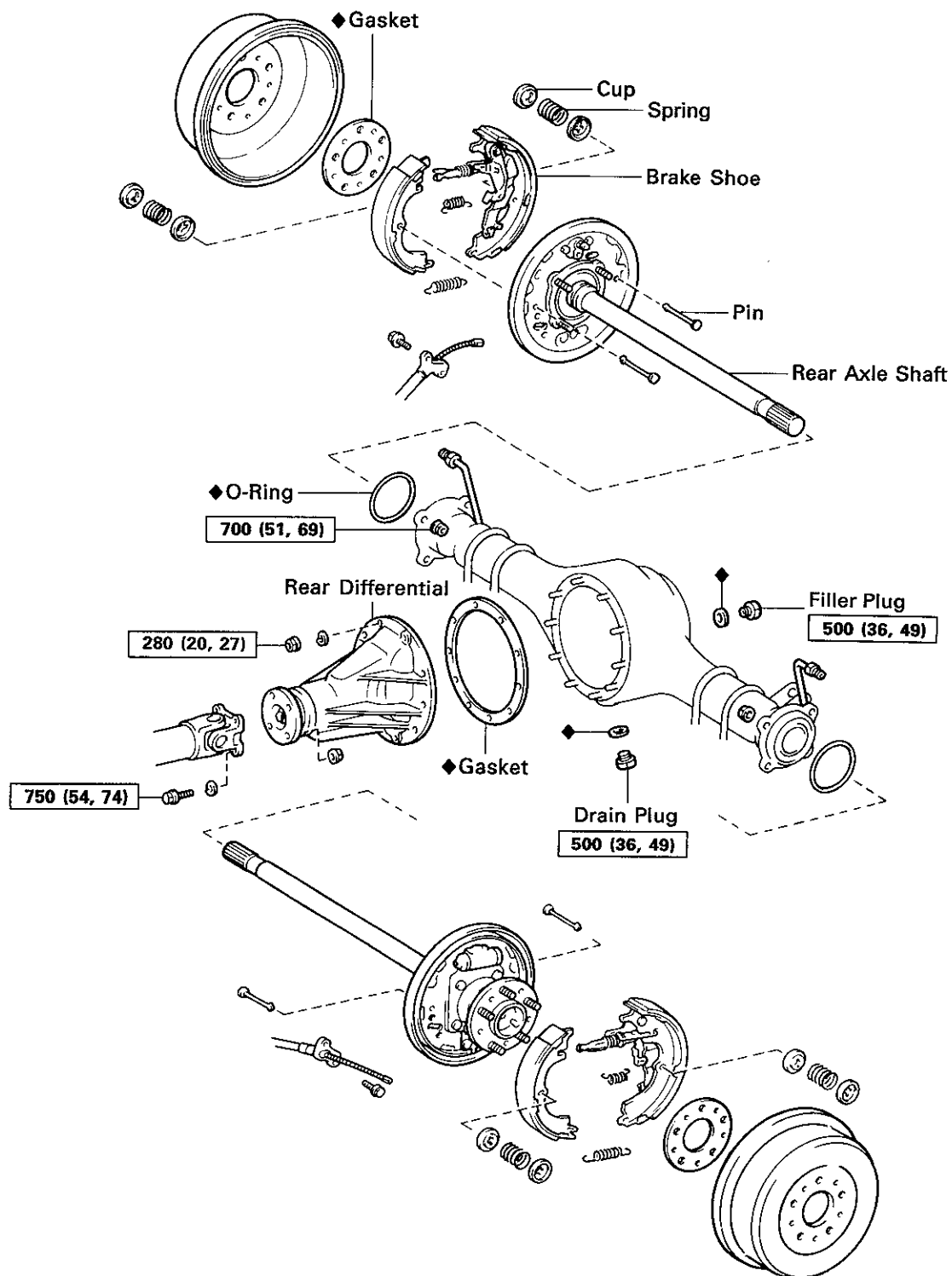
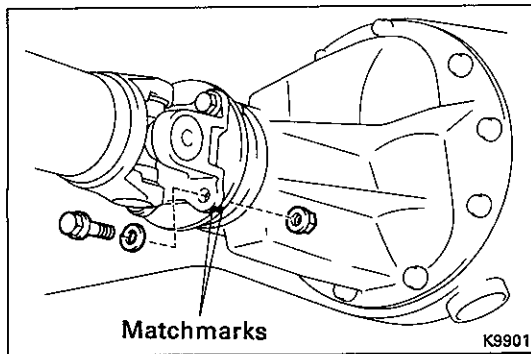


Removal and Installation of Rear Differential COMPONENTS



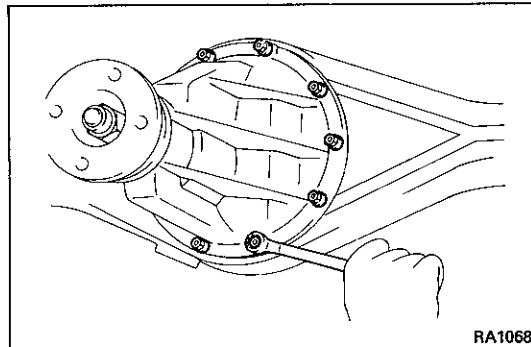
kg-cm (ft-lb, N-m) : Specified torque

◆ Non-reusable part



REMOVAL OF DIFFERENTIAL

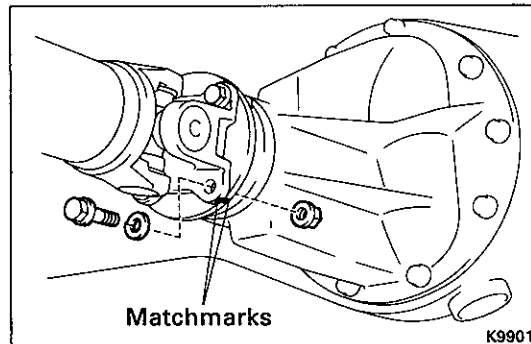
1. REMOVE DRAIN PLUG AND DRAIN DIFFERENTIAL OIL
2. REMOVE REAR AXLE SHAFTS
(See page SA-117)
3. DISCONNECT PROPELLER SHAFT FROM DIFFERENTIAL
(See page SA-122)
4. REMOVE DIFFERENTIAL CARRIER ASSEMBLY



INSTALLATION OF DIFFERENTIAL

(See page SA-135)

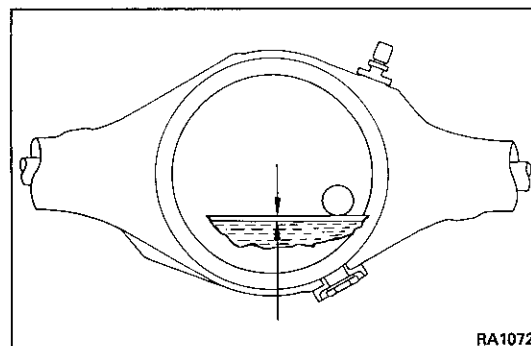
1. INSTALL A NEW GASKET
2. INSTALL DIFFERENTIAL CARRIER ASSEMBLY
Install the differential carrier assembly in the axle and install the 10 nuts. Torque the nuts.
Torque: 280 kg-cm (20 ft-lb, 27 N·m)



3. CONNECT PROPELLER SHAFT FLANGE TO COM-PANION FLANGE

- (a) Align the matchmarks on the flanges and connect the flanges with four bolts and nuts.
- (b) Torque the bolts and nuts.

Torque: 750 kg-cm (54 ft-lb, 74 N·m)



4. INSTALL DRAIN PLUG AND FILL DIFFERENTIAL OIL

Oil type:

w/o LSD API GL-5
w/ LSD API GL-5 for LSD

Viscosity:

Above -18°C (0°F) SAE 90
Below -18°C (0°F) SAE 80W or 80W-90

Capacity: 2.2 liters (2.3 US qts, 1.9 Imp. qts)